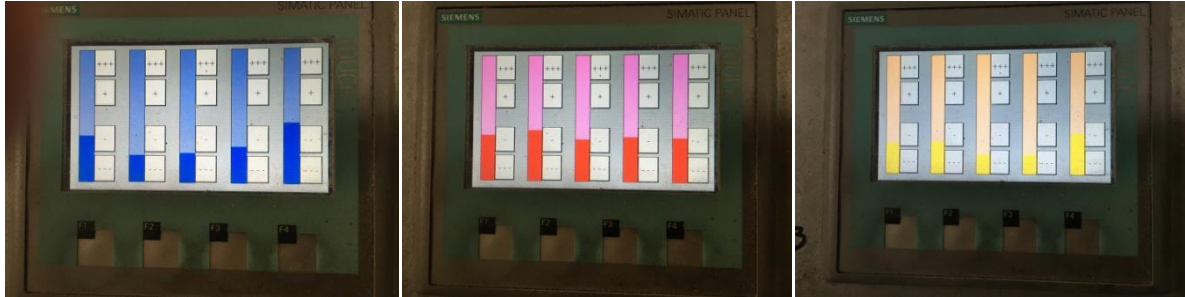




# FOC Fan Out Control

Productdescription

The average gives the world its existence,  
the extraordinary their value.  
(Oscar Wilde)



## Fan-out effect in web offset

The fan-out effect describes the broadening of the paper web in web offset printing and is mainly caused by moisture absorption of the paper web in the printing units. This creates register differences and thus quality losses and waste.

### countermeasures

The fan-out effect is eliminated with air nozzles or rollers as the driver. These bring the paper web into a sinusoidal shape to counteract the widening. After the first printing unit, only air nozzles are usually used due to the illustration.

Since even the same papers behave differently in terms of moisture absorption and thus expand differently, the amplitude must be adaptable. This is achieved by changing the air flow to the individual nozzles.

So far there are two ways to control the air nozzles. On the one hand, the flow is set using manual controls that are mounted on the printing units. On the other hand, an automatic closed-loop system takes over control.

The manual solution works technically very satisfactorily, but has the major disadvantage that the employees have to travel long distances and lose time until the correct operating points of the 15 to 27 nozzles are set. In addition to the loss of time, there is also the problem of increased waste and fluctuating quality due to greater tolerance.

The offered closed-loop systems eliminate the problems of manual solution through automatic detection and regulation, but are very expensive and sensitive to purchase and maintain.

This is where the FOC - Fan Out Control comes in. It does not know the disadvantages of manual control and avoids the costs and sensitivities of an automatic closed loop system

## FOC – Fan Out Control

FOC is the effective and inexpensive system for eliminating the fan-out effect.

The FOC consists of an operating unit which, depending on the machine setup, is installed in the most convenient position for the employee, a control and valve boxes which are mounted on the printing units.

The printer controls the air volume for each individual nozzle via the touch panel of the control unit. The effects are immediately visible. Thus, the best result can be achieved without effort and loss of time.



### Your advantages:

- ✓ shorter setup times
- ✓ less waste
- ✓ higher quality lower error tolerance of the operator through avoided work
- ✓ more time for the operator to devote himself to more value-adding activities
- ✓ maintenance-free
- ✓ redundant system
- ✓ less investment costs
- ✓ less life cycle costs
- ✓ higher added value

**If you have any further questions, please contact:**

**mematech GmbH**

**Westendstraße 1**

**45143 Essen**

**Telefon +49 201 490394 50**

**Telefax +49 201490394 57**

**[info@mematech.de](mailto:info@mematech.de)**

**[www.mematech.de](http://www.mematech.de)**